

City of Nederland
Public Infrastructure Progress Reports
June 2026



Monthly Project Update

June 10, 2026

Client: City of Nederland

Project: 2622301 – Avenue D Sewer Line Replacement (South 20th Street to South 21st Street)

Client PM: Taylor Shelton, P.E.

Alliance PM: Joseph G. Majdalani, P.E.

Project Description

The existing 6-inch sanitary sewer main along Avenue D, between South 20th Street and South 21st Street, has exceeded its anticipated service life and is contributing to environmental concerns and service interruptions for residents within the project area. The proposed project includes replacing the existing sewer main with a new 8-inch PVC Schedule 40 line and replacing all associated service connections served by the existing main. In addition, a new sanitary sewer manhole will be installed to comply with TCEQ requirements.

The improvements will enhance system reliability and provide improved sanitary sewer service to residences within the project limits.

Discipline Report

1. Civil / Structural Progress

- a. Field survey work was performed on May 15, 2026.
- b. The preliminary survey was completed on June 4, 2026.
- c. The project kickoff meeting was held on May 18, 2026.
- d. The project remains on schedule to submit the Issued for Approval (IFA) 90% design package for City review and comment on June 16, 2026.

2. Budget Review

- a. Alliance anticipates completing the project within the approved budget.
- b. The design plans and specifications (bid package) are approximately 90% complete.



PROJECT NAME: Allen Meadows Drainage Improvements
CLIENT: City of Nederland
ENGINEER: Arceneaux Wilson & Cole, LLC
DATE: June 5, 2026

PROJECT SUMMARY

1) Project Summary

The project aims to improve drainage conditions within the cul-de-sac at Avenue N and 17th Street to reduce water level during high intensity storm events and prevent further flooding in adjacent residential homes. AWC is currently in the design and utility/stakeholder coordination phase.

2) Work Completed This Period (5/1/26 – 5/31/26)

- a) Utility coordination and permit documentation continued with Entergy, TxDOT and DD7 for access permits and/or easements.
- b) Design/analysis of existing conditions and proposed conditions for 100-year storm event completed. Proposed construction plans are ready for City's review and comments (meeting set for June 9th).
- c) Proposed easement for proposed storm sewer line between residential properties finished and included in construction plans.

3) Upcoming Work Items (6/1/26 – 6/30/26)

- a) Obtain signatures for easement drawing and documents.
- b) Submit final permit drawings to all utility providers after meeting with City (pending comments or revisions).
- c) Finalize plans per comments from City and deliver completed contract book with Engineer's Estimate to begin bidding phase.

4) Potential Issues/Delays

- a) Coordination timeline with external agencies (TxDOT, Entergy, Flint Hills).



409.833.3363
TBPELS F-1386
TBPELS 10110501
www.LJA.com

2615 Calder Avenue, Suite 500, Beaumont, Texas 77702

LJA Engineering, Inc.
GIS System Updates
Work Summary

For Services rendered through 5/29/2026

Scope Items and Key Tasks

1.0 Discovery and System Updates

The current status of the project was discussed on site at a meeting on 5/27/2026, including the readiness of the City of Nederland data to be placed on a City server location assessable by each department in need. Since that meeting and the preparation of recommendations for additional licensing and the need for any remaining project information from 2022 – current. I have also had two visits to JCAD to acquire the latest 3” aerial photography for Jefferson County and the new parcel data necessary to update the City of Nederland’s GIS system. I have also requested wastewater data from SPI in order to start working on the wastewater map updates as well.

Plan moving forward is to take the information from SPI and add this information to the sanitary sewer system maps, and then produce large printed maps for additional markups from the water, sewer and drainage supervisors.

Thanks,

Rick Masters
Senior Environmental Scientist
LJA Engineering, Inc.

May 27, 2026

Meeting Agenda

City of Nederland GIS System Update 2026

1. Credits and User Licensing
2. CPUs for Power Users
3. Storage locations for on-premises data (Network Drive)
4. Discovery and map data acquisition
 - a. Data Gaps (2022 – Current)
 - i. Based on a complete examination of the data
 1. We have a complete copy of all existing City GIS Data
 2. Most data appears to be updated to 2022
 - a. Need work orders and projects from 2022 forward
 - i. Water, Sewer and Drainage
 - b. Needed JCAD Parcels and Aerial Photography
 - i. Email releasing data to LJA as your GIS contractor
 - c. Data from SPI on recent wastewater smoke testing
 5. Login and Review waterline web-map and our assessment of 2 inch water lines

Credits and Storage Location for On-Premises Data and Photos

ArcGIS Online Status:

Recommendations on credit purchases,

Initially to take care of negative credits and create a year or more of buffer purchase 4000 credits. After complete implementation and hosting of all updated data the credit consumption will rise slightly from 65 per month to approximately 100 credits per month. Plus the City will receive additional online credits for additional licenses purchased.

<https://www.esri.com/en-us/arcgis/products/credits/buy>

Currently a block of 1000 credits costs approximately \$120.00 this cost approximately \$480.00 to be current of credits. Credit blocks are good for 24 months.


⚠️ Your organization has used all available credits. Some actions that require credits have been restricted for some members. [Remove restrictions](#)

Home Gallery Map Scene Notebooks Groups Content Organization Pubworks Employee redprw_cityofnederland

City of Nederland Overview Members Licenses Dashboard Reports Settings

🚩 New credit dashboard is available for your organization. Status reports are now in the Reports tab. [Learn more](#) [See the new Dashboard \(Beta\)](#) < 2/2 >

City of Nederland [Edit settings](#)

 [Create activity report](#)

Subscription ID: 3427031255

[Feature Data Store](#)


- Standard, 0% storage used
- Regional data hosting: United States
- [Services health dashboard](#)
- ✓ All systems operational

Created: Feb 24, 2015 | Renewal date: Jan 24, 2027

Credits [View status](#) [Buy credits](#)

Total remaining credits	Last 30 days	Last 24 hours
-3,479.18	62.91	2.05

Last 30 days



Legend: Storage (green), Analytics (blue), Subscriber content (red)

Members [Invite members](#) [Manage members](#)

1 members with unverified email addresses

Email verification helps members ensure they can receive critical information from ArcGIS Online, such as password resets and account changes. Members can verify their emails on the 'My settings' page, or when prompted at sign in.

[Create a member report](#) [View unverified members](#)

Add-on licenses [Manage add-on licenses](#)

ArcGIS Pro Basic

1 assigned 1 available 2 total

Users and Licenses:

My advice is to increase from 2 ArcGIS Pro Basic licenses to the following:

Add 3 additional ArcGIS Pro Basic license by purchasing 3 Creator licenses in ArcGIS Online bring your total to 5 (depending on how many Field Map editors and Creators we are expecting to have) Each Creator would give you the ArcGIS Pro Basic Desktop and 500 credits.

Your current cost for these licenses is \$1400.00 per year for the two the City has and adding \$2100.00 to get to an annual licensing fee of \$3500.00 per year or less depending on expected use.

This anticipates users from other departments such as Fire/Police or Planning coming on board with ArcGIS Pro Basic and a Creator Role in ArcGIS Online.

In Addition, Adding 5 Viewer User Types in ArcGIS Online is \$125.00 per year per user. This user type would be for administrative personnel who do not need to edit maps but would need access to maps and applications that are not public maps.

Public facing maps for your website and/or sharing view only data does not require a user purchase. The use of these maps will consume a small amount of credits generally not significantly affecting credit consumption.

Current ArcGIS Online Users

The screenshot shows the ArcGIS Online user management interface. On the left, there are filter sections: 'Categories' (no members yet), 'User type' (set to 'Creator'), and 'Role' (set to 'Administrator'). The main table displays two users:

Name	Last login	User type	Role
FE Pubworks Employee redpw_cyfofndorland	Today	Creator	Administrator
BB Barry Burns bburny1973_cyfofndorland	Jun 9, 2023	Creator	Administrator

Recommendations Summary:

User / License Types	Quantity	Bonus Online Credits with Purchase	Capabilities	Annual Cost
Creator (ArcGIS Pro Basic)	5	2 existing users adding (3) new users would yield 1500 bonus credits	Desktop and Field Map Application Creation, Data Editing, of Internal Data	\$3500.00
Viewers (ArcGIS Online Only)	5	0	View internal map applications and print maps	\$625.00
ArcGIS Online Credits	4 blocks of 1000	-	Bring credits current	\$120.00
Total Annual Cost for Licensing and Credits (ArcGIS Online Approach)				\$4245.00

CPU Recommendations for Power Users:

4 Core or more processors, X64 Platform with a minimum of 32 gigs of RAM, 1 Terabyte free storage, Advanced Video or Graphics Card (Windows 10x or greater)

Manuel De La Rosa

From: Steve Jordan <sjordan@spi-eng.com>
Sent: Tuesday, June 9, 2026 3:03 PM
To: Manuel De La Rosa; Taylor J Shelton
Subject: SPI Progress Report, City-Wide Sanitary Sewer Study, 6/9/2026

Good Afternoon Mr. De La Rosa,
The following is our progress report for the City-wide sanitary sewer system study.

Smoke Testing/Manhole Inspections - Completed.

Flow Monitoring - Flow monitors were installed on March 24 and scheduled for removal last week. Sufficient rain data was recorded. We expect the final report and data within two weeks. Rain event data will be included in the model to calibrate the system reaction.

Hydraulic Analysis - A model of the City's collection system has been built. The dry weather model is calibrated. We have started running wet weather models based on preliminary data, which will be calibrated once the final flow data is received. One thing we are working on is scenarios for improvements in the western section. Specifically, we are looking at: 1) Increasing the size of the trunk line to try to lower the hydraulic grade line, 2.) a possible lift station which would capture the flows from Helena Park Elementary, 30th St., 31st St., and Tipps Dr and deliver flows all the way to the plant to take those off the system; and 3.) A larger lift station which would capture most of the flows from the western section and deliver them directly to the treatment plant. We will provide additional information on these scenarios as soon as we can.

Final Report - The final report will include results of both smoke testing and hydraulic analysis, along with recommendations and associated estimated costs.

Please let me know if you have any questions. Thanks

Steve J. Jordan, P.E. | Vice President
p 409.866.0341 | c 409.720.8644 | f 409.866.0337



www.SPI-ENG.com



TBPE Firm No. F-5755
TBPLS Firm No. 10123800
LA EF.0005711
3737 Doctors Drive
Port Arthur, Texas 77642
Office (409) 983.2004
Fax (409) 983.2005

June 5th, 2026

Manuel De La Rosa
City Manager
City of Nederland
207 N 12th Street
Nederland, TX 77627

Re: Project Engineering/Surveying Status

1. CON HMAC Project

- Surveying – Complete
- Geotechnical Report (Sub-Consultant) – anticipated completion by end of June 12th.
- 75% Preliminary plan set – Complete
- 90% Plan set – anticipated in 4 weeks

Future Action Item: Discuss options for Avenue G

2. CON Concrete Panel Replacement Project

- Surveying – Complete
- 75% Preliminary plan set – Complete
- 90% plan set - anticipated in 3 weeks

3. Shelly Drive Drainage Improvement Project

- 75% Preliminary plan set complete.
- Preliminary easement descriptions – completed

The City will need to present preliminary easements to adjacent landowners. Soutex will revise easement as necessary to match agreements between landowners & City. Soutex will finalized plans based on easements.

4. Hardy Avenue Drainage Project.

- Proposed easement completed.

The City will need to present preliminary easement to Catholic Diocese of Beaumont. Soutex will revise easement as necessary to match agreement between landowner & City. Once easement location is agreed to, it is anticipated Soutex will produce 95% preliminary plan set in 1 week for DD7 & City review.

City of Nederland WWTP Facility Assessment

Client Name: City of Nederland

Subject: Progress Report

Created By: Simone King, PE

Westwood No.: R0043842.04

Date: 6/5/2026

Westwood

Work in Progress:

- The project team is writing the preliminary condition assessment of the WWTF and delineating preliminary rehabilitation recommendations to be discussed with the City prior to finalizing the assessment report.
- Coordination with equipment representatives and manufacturers to compile updated pricing for cost estimate development.
- Preparation of preliminary assessment, rehabilitation recommendations, project summaries, and initial cost estimates for distribution to City to review at the scheduled June 23rd meeting.

Work to be completed by next Progress Report:

- Draft facility assessment submitted to City
- Review of draft facility assessment with City

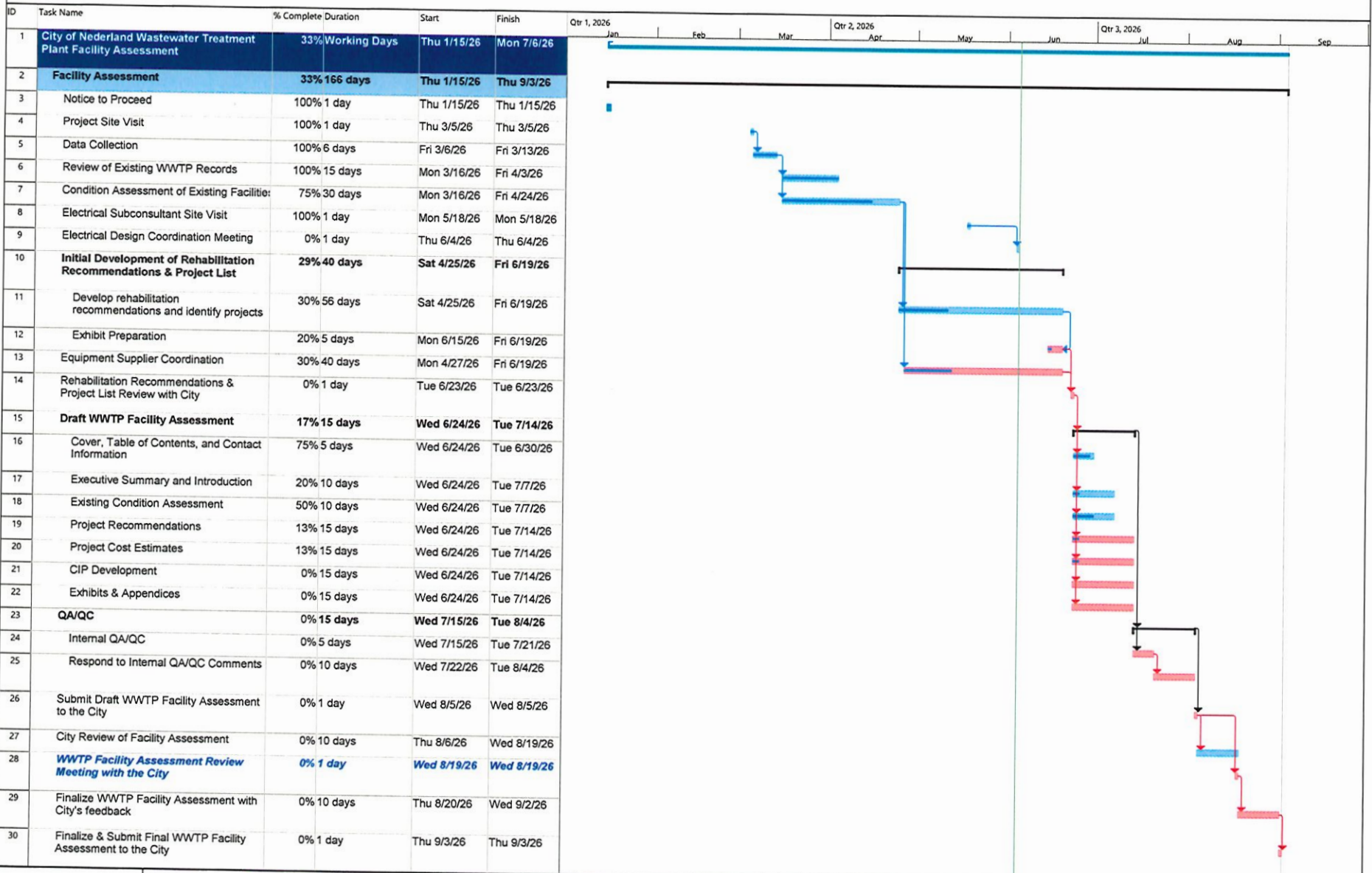
Updates to the Schedule:

- Review meeting scheduled with City for June 23rd.
- See attached, progress and scheduled City meeting reflected.

Project Notes / Questions:

- None at this time.

Project #: 0043842.04
 Client: City of Nederland
 Project: Wastewater Treatment Plant Facility Assessment
 Date: Fri 6/5/26



Westwood

Task	Project Summary	Manual Task	Start-only	Deadline	Manual Progress
Split	Inactive Task	Duration-only	Finish-only	Critical	
Milestone	Inactive Milestone	Manual Summary Rollup	External Tasks	Critical Split	
Summary	Inactive Summary	Manual Summary	External Milestone	Progress	

City of Nederland WWTP Centrifuge Replacement

Client Name: City of Nederland

Subject: Progress Report

Created By: Gabriela Y. Porras, PE

Westwood No.: R0043842.03

Date: 6/7/2026

Westwood

Work in Progress:

- Electrical and structural subconsultants completed site visits to conduct evaluations.
- Sludge sampling is scheduled from Polydine and Alfa Laval in order to get polymer recommendations.
- Coordination with EI2 and Alfa Laval to confirm centrifuge sizing, polymer equipment, and diverter gate details for procurement process.
- Coordination of pricing to be received from equipment suppliers.

Work to be completed by next Progress Report:

- Confirm structural and electrical layouts in dewatering room with feedback from equipment vendor and subconsultants.
- Receive polymer recommendation from Polydine and Alfa Laval.
- Have the information for manufacturer finalized to begin procurement process.

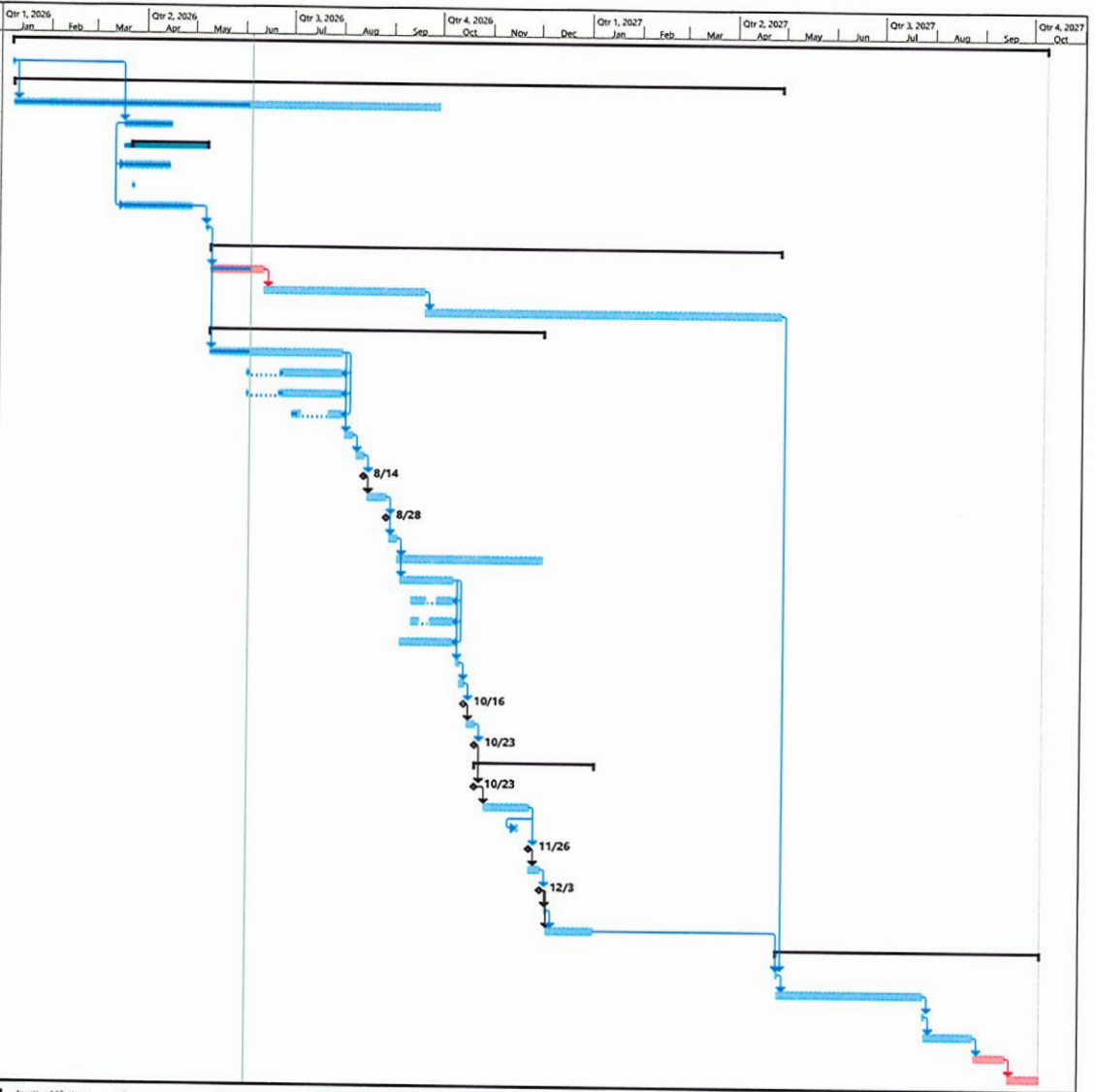
Updates to the Schedule:

- No major updates.

Project Notes / Questions:

- None at this time.

ID	Task Name	% Complete	Duration	Start	Finish	Predecessors
1	City of Nederland Centrifuge Rehabilitation	13%	457 days	Thu 1/8/26	Fri 10/8/27	
2	Project Kickoff	100%	1 day	Thu 1/8/26	Thu 1/8/26	
3	Design Phase Services	16%	339 days	Fri 1/9/26	Wed 4/28/27	
4	Project Management and Coordination	55%	187 days	Fri 1/9/26	Mon 9/28/26	2
5	Survey	100%	21 days	Wed 3/18/26	Wed 4/15/26	2
6	Preliminary Design (60%) Submittal	100%	35 days	Mon 3/23/26	Fri 5/8/26	
7	Collect and Review Existing Data	100%	20 days	Wed 3/18/26	Tue 4/14/26	55S
8	Equipment Vendor Meeting	100%	1 day	Mon 3/23/26	Mon 3/23/26	
9	Preliminary Site Plan & Exhibit for Scope Verification	100%	30 days	Wed 3/18/26	Tue 4/28/26	55S
10	Meet with City to Verify Scope	100%	1 day	Fri 5/8/26	Fri 5/8/26	9
11	Centrifuge Procurement	2%	253 days	Mon 5/11/26	Wed 4/28/27	
12	Coordinate with Manufacturer for Correct Product	75%	25 days	Mon 5/11/26	Fri 6/12/26	10
13	Centrifuge Submittal Review & Approval	0%	100 days	Sat 6/13/26	Sun 9/20/26	12
14	City Procure Centrifuge (Fabrication and Delivery)	0%	220 edays	Sun 9/20/26	Wed 4/28/27	13
15	Final Design (90% & 100%) Submittals	8%	149 days	Mon 5/11/26	Thu 12/3/26	
16	90% Construction Plans	30%	60 days	Mon 5/11/26	Fri 7/31/26	10
17	90% Technical Specifications	10%	30 days	Wed 6/3/26	Fri 7/31/26	16FF
18	90% Contract Specifications	10%	30 days	Wed 6/3/26	Fri 7/31/26	16FF
19	90% OPCC	30%	10 days	Wed 7/1/26	Fri 7/31/26	16FF
20	90% QA/QC	0%	5 days	Mon 8/3/26	Fri 8/7/26	17,16,19,18
21	Revisions after QA/QC	0%	5 days	Mon 8/10/26	Fri 8/14/26	20
22	Submit 90% Package to City	0%	0 days	Fri 8/14/26	Fri 8/14/26	21
23	City Review of 90% Package	0%	10 days	Mon 8/17/26	Fri 8/28/26	22
24	Meet with City on 90% Package	0%	0 days	Fri 8/28/26	Fri 8/28/26	23
25	Adjustments to 90% Package per City Comments	0%	5 days	Mon 8/31/26	Fri 9/4/26	23
26	TCEQ Review and Approval	0%	90 days	Sat 9/5/26	Thu 12/3/26	25
27	100% Construction Plans	0%	25 days	Mon 9/7/26	Fri 10/9/26	25
28	100% Technical Specifications	0%	15 days	Mon 9/14/26	Fri 10/9/26	27FF
29	100% Contract Specifications	0%	15 days	Mon 9/14/26	Fri 10/9/26	27FF
30	100% OPCC	0%	25 days	Mon 9/7/26	Fri 10/9/26	27FF
31	100% QA/QC	0%	2 days	Mon 10/12/26	Tue 10/13/26	27,30,29,28
32	Revisions after QA/QC	0%	3 days	Wed 10/14/26	Fri 10/16/26	31
33	Submit 100% Package to City	0%	0 days	Fri 10/16/26	Fri 10/16/26	32
34	City Review of 100% Package	0%	5 days	Mon 10/19/26	Fri 10/23/26	33
35	City Approve 100% Package	0%	0 days	Fri 10/23/26	Fri 10/23/26	34
36	Bid Phase	0%	52 days	Fri 10/23/26	Tue 1/5/27	
37	City Authorize Bid Advertisement at City Council	0%	0 days	Fri 10/23/26	Fri 10/23/26	35
38	Bid Process	0%	20 days	Fri 10/30/26	Thu 11/26/26	37FS+4 days
39	Pre Bid Meeting Onsite	0%	1 day	Thu 11/19/26	Thu 11/19/26	38FS-6 days
40	Bid Day	0%	0 days	Thu 11/26/26	Thu 11/26/26	38
41	Bid Analysis	0%	5 days	Fri 11/27/26	Thu 12/3/26	40
42	Recommendation of Award	0%	0 days	Thu 12/3/26	Thu 12/3/26	41
43	City Award Contract & Issue NOA at City Council	0%	1 day	Mon 12/7/26	Mon 12/7/26	42FS+1 day
44	Contracts	0%	21 days	Tue 12/8/26	Tue 1/5/27	43,42
45	Construction Phase	0%	117 days	Thu 4/29/27	Fri 10/8/27	
46	NTP & Pre-Construction Conference	0%	1 day	Thu 4/29/27	Thu 4/29/27	44,14
47	Construction Activities	0%	90 edays	Thu 4/29/27	Wed 7/28/27	46
48	Substantial Completion	0%	1 day	Thu 7/29/27	Thu 7/29/27	47
49	Punch List & Final Completion	0%	30 days	Fri 7/30/27	Sat 8/28/27	48
50	Final Construction Paperwork	0%	15 days	Mon 8/30/27	Fri 9/17/27	49
51	Record Drawings	0%	15 days	Mon 9/20/27	Fri 10/8/27	50



Project: City of Nederland Wastewater Treatment Plant Centrifuge Rehabilitation
Date: Fri 6/5/26

Task Split	Summary	Inactive Milestone	Duration-only	Start-only	External Milestone	Critical Split
Milestone	Project Summary	Inactive Summary	Manual Summary Rollup	Finish-only	Deadline	Progress
	Inactive Task	Manual Task	Manual Summary	External Tasks	Critical	Manual Progress

City of Nederland Water Plant Clarifier #1

Client Name: City of Nederland

Subject: Progress Report

Created By: Trey Glasper

Westwood No.: R0043842.00

Date: 6/7/2026

Westwood

Work in Progress:

- Contractor to make necessary trough adjustments to achieve even water flow across all troughs.
- Contractor to fix minor sag in aerial bridge

Work to be completed by next Progress Report:

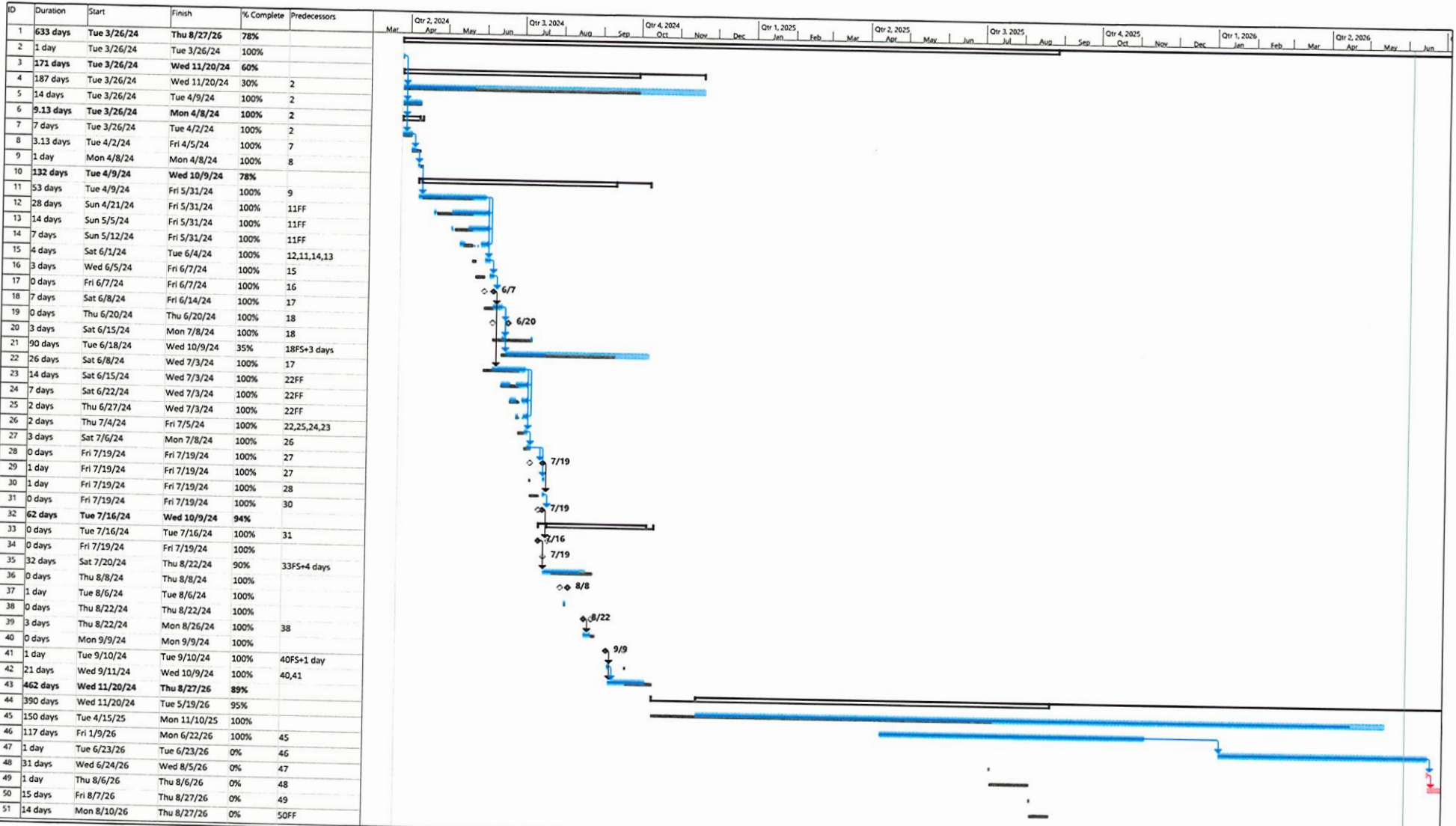
- WPS & Electrical subconsultant to complete substantial completion site visit
- Substantial completion inspection and punch list generation
- Request and receive final paperwork from Contractor

Updates to the Schedule:

- No updates

Project Notes / Questions:

- None at this time.



Project: City of Nederland Clarifier Rehabilitation & WP Facility Assessment
 Date: Fri 6/5/26

Task Split	Project Summary	Manual Task	Start-only	Deadline	Baseline Milestone
Milestone	Inactive Task	Duration-only	Finish-only	Critical	Baseline Summary
Summary	Inactive Milestone	Manual Summary Rollup	External Tasks	Critical Split	Progress
	Inactive Summary	Manual Summary	External Milestone	Baseline	Manual Progress

City of Nederland Lift Station Rehab

Client Name: City of Nederland
Subject: Progress Report
Created By: Jim Roberts, PE
Westwood No. 43731.00
Date: 6/3/2026

Westwood

Work in Progress:

- Received station service area maps from SPI on 6/3/26.
- System curve calculations and pump selection for both stations.
- 60% plans for Canal LS, 30% for Nederland LS.

Work to be completed by next Progress Report:

- 60% design of Canal Ave lift station. Keep existing wet well.
- 30% design plans for Nederland Ave lift station.
- Cleaning and Inspection of both lift station wet wells. Coordinate w/City.

Updates to the Schedule:

- See attached schedule.
 - Skip 30% plans for Canal as we are keeping the existing wet well. Bring 60% Canal plans to 6/23 City meeting.
- Changes not expected to impact Bidding schedule.

Project Notes / Questions:

- Will coordinate with City on wet well clean and inspection by AIMS.

SCHEDULE

Activity - Each Lift Station	Estimated Completion
Notice-To-Proceed	2/6/2026
Site Visit & Coord Survey & SUE	2/11/2026
Topo Survey	3/11/2026
Conceptual Design Submittal - After Survey (30%)	5/15/2026
City Review (30%)	5/29/2026
Preliminary Design Submittal (60%)	6/26/2026
City Review (60%)	7/10/2026
Bid Ready Submittal (90%)	8/7/2026
Final Client Review Complete	8/21/2026
Final Plans Complete (100%)	9/4/2026
Bidding & Award	10/30/2026
Begin Construction w/NTP	11/6/2026
Complete Construction (Estimate, per Station)	5/7/2027
Record Drawings	5/21/2027

City of Nederland Wastewater Rehab West

Client Name: City of Nederland
 Subject: Progress Report
 Created By: Jim Roberts, PE
 Westwood No. 69501.00
 Date: 6/3/2026



Work in Progress:

- Reviewed video on Phase 1 section. Very few blockages observed.
- Phase 1 design waiting for SPI hydraulic study for potential line size change.
- Completing review of available Phase 2 video.
- Working with City on access to 6-7 remaining lots w/manholes.

Work to be completed by next Progress Report:

- Submit Phase 1 and Phase 2 60% plans.
- Visit site to check feasibility of proposed repairs.
- Review Section of Phase 2 video with City.
- Coordinate with SPI on hydraulic analysis for Phase 1 section.

Updates to the Schedule:

- See schedule below.
- Design submittal pushed to 6/23 at City visit for discussion. Will still make scheduled 8/4/26 90% submittal.
- The Phase 1 design on hold until we know results from SPI hydraulic analysis.

Project Notes / Questions:

- Need assistance from City for access to some homes who refused AIMS. Addresses to be provided.
- Some lines blocked by debris, couldn't complete video. AIMS to provide estimate for additional time to clear lines.

SCHEDULE

Activity	PHASE 1	PHASE 2
Kick-off Meeting	2/11/2026	
Clean & Televis Lines - Part 1	3/1/2026	
Review Video w/Client - Part 1	4/7/2026	4/7/2026
Clean & Televis Lines - Part 2, Begin Design		3/15/2026
Review Video w/Client - Part 2		4/14/2026
Clean & Televis Lines - Part 3		5/12/2026
Review Video w/Client - Part 3		5/26/2026
Design - 60% Plans	6/23/2026	6/23/2026
City Review - 60% Plans	7/7/2026	7/7/2026
Design - 90% Plans	On Hold	8/4/2026
City Review - 90% Plans		8/18/2026
Design - 100% Plans		9/15/2026
City Review - 100% Plans		9/29/2026
<i>Bidding</i>		11/24/2026
<i>Construction</i>		11/23/2027